



Total
Cable
Solutions



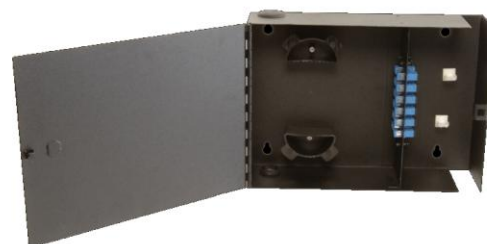
Wall Mount Fiber Patch Panel, 2, 4, and 8 Adaptors

Product Overview

The TCS wall mount fiber distribution enclosures are built to construction grade specifications. Each unit is manufactured with durable steel and coated with a scratch resistant polyester powder coat finish. Units are available in three sizes that fit the most common distribution requirements. Each unit is specifically designed for minimal space requirements. All units support both Patch and Patch/Splice applications. Each unit has two compartments separating the network terminations from the distribution terminations. Units are designed with a single door for improved access. Other additional options available like keyed locks and dual door designs upon request.

Features

- Accepts a wide range of TCS Adapter Panels/ Cassettes
- Products all meet Telecordia specifications for bend radii
- Can be used in all indoor areas
- Durable powder coat matt black finish
- Constructed with durable 18 Gauge Steel
- Single access primary door for maximum access to terminated Network fibers and associated splice trays.
- Open Patchcord/Jumper pathway for maximum flexibility
- Top and bottom feeder cable entrances with 1" conduit installation capability
- Optional Keyed Lock capability
- Aluminum Splice Tray (12 Single Fuse Capability)



2 Adaptor Version



4 Adaptor Version



8 Adaptor Version

Specifications

Dimensions:

- 2 adaptor = 13.0" H x 9.5" W x 3.5" D
- 4 adaptor = 13.0" H x 11.5" W x 3.5" D
- 8 adaptor = 17.0" H x 12" W x 6" D

Panels: TCS Adapter Panels/ Cassettes (not included)

Material: 18 Gauge Steel

Coating: Electrostatic polyester powder coat black paint

Made in the USA

